

Focus on 14

The Region 14 School District Monthly Newsletter

Nonnewaug High School's Senior Citizen Meal A Holiday Treat for Local Residents



Last month, 134 boxed meals of turkey pot pie, glazed carrots, gravy, corn muffins, stuffing, cranberry sauce, and Spiced Apple Crumb Tart prepared by NHS Culinary students were given out to local senior citizens in a drive-through Holiday Meal in the high school parking lot.

Culinary Arts teacher John Dominello said the event is made possible each year by a huge multi-department and student organization effort. Band and chorus students provided festive music for the occasion, flowers created by Agriscience students were given to many senior citizens in their cars, and a sampling of art from art students accompanied the boxed meal whose label was created by students in Digital Design.

Culinary Arts I students made apple tarts with local apples. FBLA held a food drive for items in advance of the event. The Advanced Culinary prepared turkey pot pies using local produce, carrots glazed with honey made from the school's beehives cultivated by the Farm to Table students, and the maple-basil corn muffins were made from local corn from Logue Farms, greenhouse-grown basil and maple syrup produced in the school's sugar house.

The Senior Citizen Holiday Meal has been a cherished annual school and community tradition for the past 14 years -- 11 of those years as a sit-down event in the culinary classrooms at the high school.



The Senior Citizen Meal was made possible by the coordination effort of students, staff, and faculty members at NHS

From the Superintendent

As we close out 2022 and head into the new year, I first want to convey what a privilege and honor it has been getting to know all the supportive staff, students, and parents in the Region 14 School District. It's a very exciting time as our students are focused on learning and our staff has gone above and beyond to meet the needs of all students in the district.

In the fall, I proposed my entry plan to the community for the first 100 days as Superintendent. I started the process of developing relationships through student, parent, and staff advisories. These advisories gave me a great perspective on the wonderful culture of Region 14 and the exceptional programs and activities offered in each school.

This fall, we also began the process of evaluating our K-12 curriculum offerings. Through a comprehensive review by the Board of Education's Curriculum Committee in conjunction with administration, we are looking to further enhance our offerings to ensure that our students are prepared to face the challenges of the 21st century. This goal is further supported with the continued development of our Vision of a Learner. In addition, an audit of our Region 14 Board of Education Policies is being completed by the Connecticut Association of Boards of Education.

I am proud to share the exciting news that Mitchell Elementary School has been recognized by the Connecticut State Department of Education as a "School of Distinction" for overall student achievement and high academic growth for the 2021-22 school year. This tremendous accomplishment places Mitchell Elementary School in the top 10% of elementary schools in Connecticut based on high student achievement performance. This honor is a testament to the wonderful efforts of staff and support of parents.

Another recent accolade for our district saw the Agriscience Program at Nonnewaug High School recognized at the National FFA Competition as one of the best Agriscience programs in the country. We are extremely proud of the students and staff who excel at nationals each year and represent our district in such a positive and successful manner.

One of my goals is to restructure and improve communications in our school community. Region 14 has launched both Facebook and Instagram pages that will be used to communicate district news, updates, and happenings. This month we also begin delivery of a monthly electronic newsletter. These new communication initiatives, in combination with our district website, are essential tools to share the exciting events and news happening each day in Region 14.

I would like to wish everyone a happy and healthy holiday season. I look forward to working with the fantastic students and staff at all our schools in the new year. It is an honor and privilege to work with your child each day.

Brian Murphy

STEM Lesson at Elementary Schools is a Parade of Fun



Bethlehem and Mitchell Elementary School students designed, built, and demonstrated their own STEM floats in school-wide parades in November. STEM Instructional Coach Christina Strell helped them work through engineering a design that incorporated the concepts of science, technology, engineering, and math that was movable and would stay together during a parade. The students then got to work on their own floats using simple items to generate a wonderful array of floats to rival those in the Macy's Thanksgiving Day Parade. Some of the materials students used included boxes, paper towel rolls, string, Styrofoam, baskets, popsicle sticks and more.

Motivational Speaker Brings Life Lessons and Bike Stunts to Students

Speaking to students while doing bar turns, popping wheelies, and standing on the handlebars of his tricked-out bike are some of the ways motivational speaker Chris Poulos got his points across to students in Region 14.

Poulos is a world champion athlete, youth motivational speaker, and aspiring author who shares powerful life lessons as he demonstrates amazing bicycle stunts. He visited students for special character education programs in November.

Poulos has a unique presentation and uses bike stunts interspersed with stories about his personal experiences -- a BMX stunt rider who found his way onto the NBA basketball court entertaining the crowds in between quarters to becoming a youth motivational speaker specializing in character building.

His words of wisdom for students at Nonnewaug High School and Woodbury Middle School were about respect, kindness, compassion, and working hard.



“Chopped” is a Recipe for Success In Middle School Culinary Arts

The Woodbury Middle School 7th and 8th grade Culinary students wrapped up their trimester class with a much anticipated "Chopped" cooking competition.

Students worked in teams and had 15 minutes to create their meals using chicken, potatoes, vegetables, and herbs and presented their finished product to three judges.

Staff and faculty judges were impressed with their skills and attention to detail. They were graded on presentation, taste, texture and use of ingredients.



In addition to finding their way around a kitchen, the competitive cooking competition allows students to work on teamwork along with skills in math and reading.

Culinary Arts at WMS is one of several semester-long Unified Arts offerings for students



Music Students Help Usher In Holiday Season at Community Event

Members of the Nonnewaug High School and Woodbury Middle School bands, chorus, and orchestra volunteered their time and talents to help with holiday cheer at the tree lighting ceremonies in Bethlehem.

Student musicians from each school also took part in their winter concerts at their schools. The beautiful sounds of the season were performed by the members of each school's chorus, orchestra, and bands.

If you missed them, view the school concerts online here:
www.ctreg14.org



'Tis' the Season For Giving Service Efforts Span all Schools

Student councils, service clubs, sports teams, FFA, FBLA, DECA, honor societies, and other student groups at each of our schools take on various service projects to help others in our community throughout the year. During the holiday season these efforts are numerous. Students have organized and taken part in food drives for the local food banks, a toiletry drive for needy kids, toy and clothing drives to benefit local organizations like Caring for Bethlehem and the Community Services Council of Woodbury, the Santa Shop, St. Vincent DePaul Homeless Shelter in Waterbury, Toys for Tots. The Stuff a Cruiser programs benefit children in local shelters. The Farm to Table class at NHS also made several donations of produce to food banks in Bethlehem and Woodbury. All schools participated in the PJ Day fundraiser for the Connecticut Children's Medical Center.



All students participated in PJ Day for the Kids and raised more than \$2,200



Families donated hundreds of toys for the BES and WMS Stuff A Cruiser effort for local children

Athletics

Woodbury Middle School

104 student-athletes who participated in soccer, field hockey, and cross country.

The field hockey and girls' soccer teams had undefeated seasons.

Field Hockey posted a 9-0-3 season with only one goal let in for the season.

Girls' soccer posted a 12-0 season that included seven shut out games. The girls scored a season total of 57 goals and let in only seven for the season.

Plaques celebrating the undefeated seasons for both teams will be installed in the gymnasium hallways.

Both cross country teams also enjoyed success with many runners posting personal best times throughout the season and a solid showing at the middle school championships held at Wickham Park in November.

The boys' soccer team finished with a record of 10-2.

The WMS Fall athletes participated in the annual Breast Cancer Awareness initiative. Student-athletes sold pink socks, shoelaces, and bracelets during lunch waves. All profits went to the Harold Leever Cancer Center.

Nonnewaug High School

The 2022 fall season exemplified Nonnewaug High School athletics at its best. Winning records by varsity football, girls' soccer, boys' soccer, volleyball, boys' cross country, girls' cross country, and the golf team.

Girls' soccer team repeated as Berkshire League Champions and won the title in the first ever BL Tournament.

The Northwest United Co-op Football team crowned Co-Champions in the Connecticut Technical Conference and was recognized by the New York Jets in their team press conference.

29 athletes received postseason Berkshire League accolades with 5 of them earning all-state recognitions. 62 Varsity athletes were designated Scholar Athletes.

Boys' soccer honored by Western Coaches Soccer Officials Association with the Bob Stirling Sportsmanship Award.

Athlete's Council organized a bake sale at our Homecoming celebration games in October and collected more than \$1,800 that went to fighting breast cancer and The Cancer Couch Foundation.



Curriculum Corner

Professional Learning

Region 14 continues to focus on the development of the "Vision of a Learner." During a November Professional Learning day, 35 different sessions focused on two of the district's "Vision of A Learner" attributes – demonstrates empathy and effectively communicating and collaborating. Region 14 staff had the opportunity to collaborate with colleagues to translate their learning into planning for improved student performance.

During the remaining Professional Learning days this school year, middle and high school faculty will be meeting to ensure vertical alignment in their subject areas. At the elementary level, faculty will be meeting in both grade-level teams and vertical teams to ensure alignment between schools and between grades. In March, Professional Learning for middle and high school will include subject-specific lessons that will enhance teacher's instructional strategy toolbox in their content

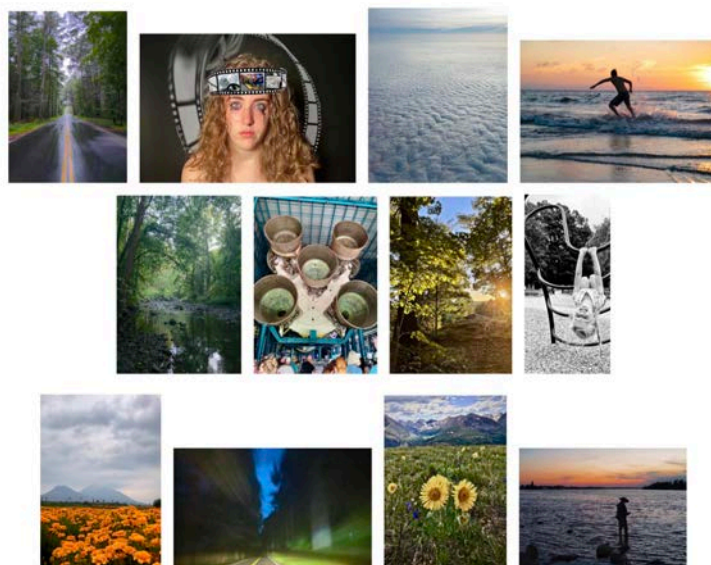
areas. For the elementary schools, the focus will be on literacy in grades PreK-5.

UConn/ECE and Opportunities for Earning College Credit

Nonnewaug High School students have numerous opportunities to engage in college-level work while in high school. Our students have access to 22 different Advanced Placement (AP) courses that span all the core academic areas as well as art. There are 226 students enrolled in at least one AP course this year alone. We currently have 10 UConn Early College Experience (ECE) courses that serve 122 students with some students taking more than one ECE course bringing our ECE enrollment to 164 students. Our faculty teaching the courses have been approved by UConn and are considered adjunct faculty members of the university.

Additionally, our Marketing students are dually enrolled in Nonnewaug and Post University for college credit.

Celebration of Young Photographers



On November 11 Nonnewaug High School art students had their work exhibited at the 12th Annual ASAP Celebration of Young Photographers in Washington Depot. This annual event showcases a unique exhibit of images by talented young photographers from across Connecticut. This year, photographs were submitted by students from 46 schools in grades 6-12. This award recognizes photographers whose pieces brilliantly embody the 2022 theme of **Adventure**. Nonnewaug High School students included in the show include:

- Karli Brandt, "The Road Ahead" – Grade 9
- Madison Dannenhoffer, "Reality Reel" - Grade 12
- Nicole Dicello, "Cloudy Beach" - Grade 9
- Jonathan Eschmann, "Days End, Surfs Up" - Grade 10
- Hailey Goldman, "Reflections" - Grade 9
- Emily Matozzo, "Saturn V Rocket" - Grade 11
- Ella Quinn, "Exploring the Wilderness" & "Unapologetically Herself" - Grade 9
- Genevieve Richmond, "Bloom from the Ashes" - Grade 12
- Sophia Starr, "Midnight Drive" - Grade 9
- Emily Stewart, "Blooming for the Sun" - Grade 9
- Jiaqi Xie, "Fishing In Harbin" - Grade 11

Inclement Weather Information

Woodbury Middle & Nonnewaug High Schools

2-hour delay start time **9:25 a.m.**

Early Dismissal **11:55 p.m.**

Bethlehem & Mitchell Elementary Schools

2-hour delay start time **10:25 a.m.**

Early Dismissal **12:55 p.m.**

*There may be unique circumstances when a 3-hour delay is needed. There may be circumstances where an emergency dismissal is needed. Region 14 will notify parents and staff regarding the dismissal times.

Student Services Update

Donna Marcinek, Director of Student Services will be retiring from Region 14 at the end of January. Mrs. Marcinek has been a dedicated member of the Region 14 staff for over 37 years, and we wish her all the best in retirement. Dina Ericson will be serving as Interim Director of Student Services for the remainder of the school year. Ms. Ericson was the district's Student Services Coordinator for the current school year. Julianne Morin, the district's Social Emotional Learning Coordinator will serve as the Student Services Coordinator for the remainder of the school year.

NHS Equine Facility One Step Closer

The Ellis Clark Agriscience and Technology Program at Nonnewaug High School is a step closer to seeing the dream of the on-site equine facility become a reality. The Board of Education voted to approve \$67,880 - the remaining funds needed for the district's 20 % share of the \$1.9 million dollar state project. The project includes building an indoor horse arena equipped with six horse stalls, a feed room, a tack room, an observation area, and hay loft area. The project also includes a new larger sugar house and a new storage barn to replace the student-built structure from 1989. The new arena will create opportunities for students to directly work with and ride horses while at school. Upon completion, Nonnewaug will become one of only a few high schools in the state with that capacity. The space will provide a year- round, controlled, and safe environment for Agriscience students to work with horses as well as all large animals and livestock, space for the 4H groups to meet, and for veterinary science students to obtain hands-on experience in animal handling and restraint, physical exams, basic training and more.

Food Services Update

As a reminder, the federal program that allowed school districts to provide students with free meals during the COVID-19 pandemic has not been renewed by Congress. Region 14 Schools was able to continue to provide free meals to students during the last several months with funds allocated by the Connecticut State Department of Education's "SMART" fund. These funds helped districts temporarily sustain free meals for as long as the funds were available. Region 14's award was more than \$230,000 and got us through the first few months of the school year. These funds have been depleted and beginning in January, when students return to school after the break, Region 14 will resume charging for all meals. Prices for meals at the elementary school are \$2.95 for lunch and \$1.50 for breakfast. At the middle and high school, students will be charged \$2.00 for breakfast and \$3.30 for lunch. Please reach out with questions or concerns to Tina Tanguay, Director of Finance and Operations at 203.263.4330 or ttanguay@ctreg14.org

Board of Ed Corner

This has been a fantastic start to the 2022-23 school year, and I am pleased to feel the exceptionally positive atmosphere filling our school community each day. We have extremely talented and successful students in all our schools whose successes could not be achieved without the time and investment of our teachers who raise the performance bar every day.

The role of the Region 14 Board of Education is to provide the means to meet the needs of all our students while being sensitive to the economic climate and taxpayers. In order to do that, each year we must evaluate, reevaluate, and set goals so that our students and teachers have the resources they need for success. We must look to maintain and expand upon the already robust educational programs and supports in Region 14 while maintaining building and safety needs, providing necessary financial flexibility, and meeting any state obligations.

For 2022-23, our top priorities include the positioning of Region 14 as a safe place where our students and staff have the necessary tools for success; for our teachers to seek high levels of student performance in the classroom; to continually strive for improvement and implement improvements without a financial burden on our communities; and to set an annual budget that provides a strong academic program and opportunities for our students while remaining sensitive to rising costs.

The Region 14 community is a great place to be whether teacher, student, staff, parent, or resident of Bethlehem and Woodbury. We are looking to continue our success in the coming year.

Jim Crocker, Chairman

Student Accolades



All-State NHS Fall Athletes



Cast & Crew of "Clue" at NHS



WMS CMEA Auditioners



Agriscience at FFA Convention

Let's Get Social!

Follow Region 14 on Facebook and Instagram at **Region14SchoolDistrict** for news, engaging photos, and happenings at all our schools!



Region 14 School District
5 Minortown Road Woodbury, CT 06798

www.ctreg14.org