

Region 14 Enrollment Projected to 2017

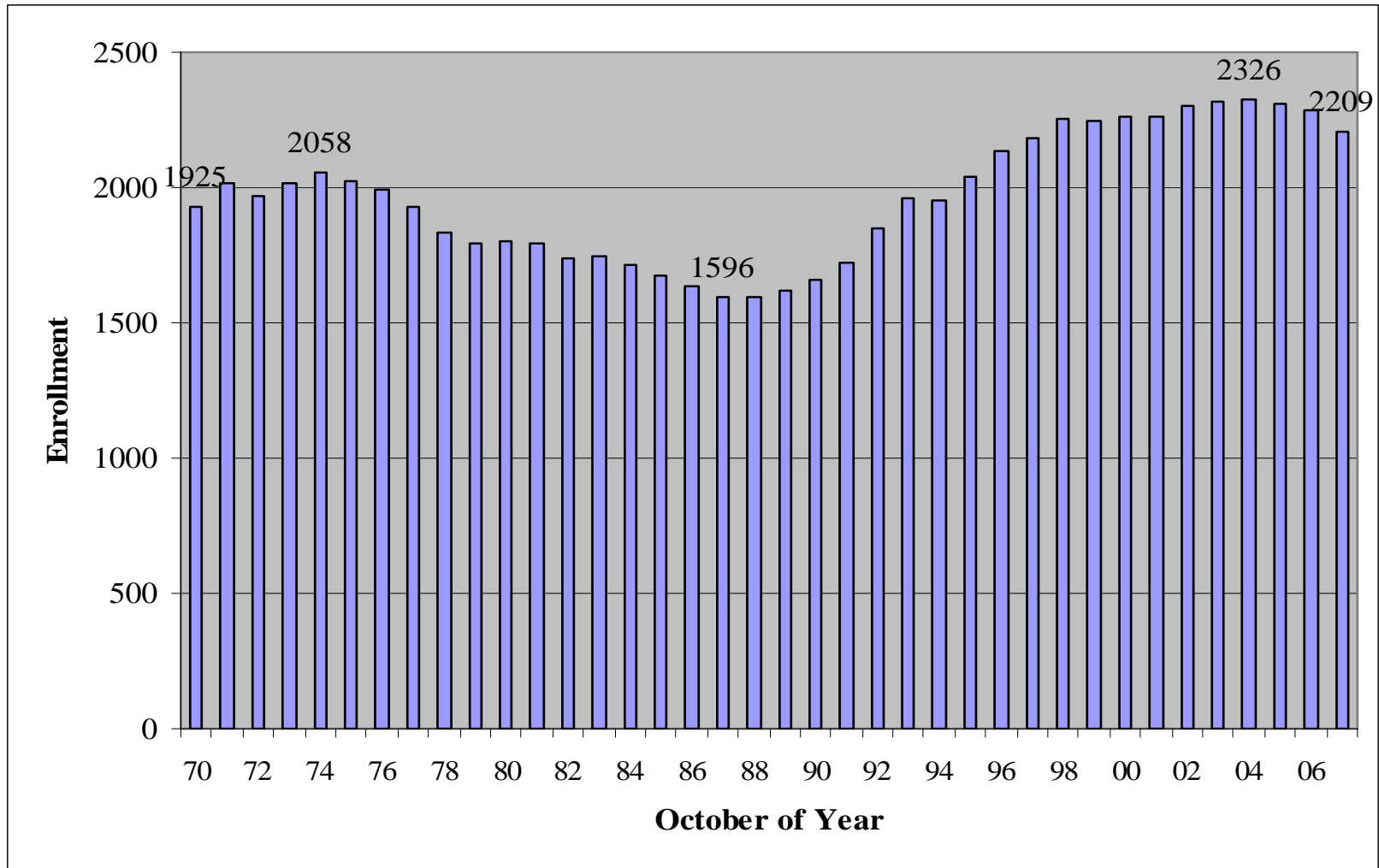
Peter M. Prowda, PhD
80 County Rd
Simsbury, CT 06070-1206
peteprowda@yahoo.com
(860) 658-9919

Presentation Organizer

- Enrollment History
- Projections by Level
- Contributing Factors
- Prior Projections

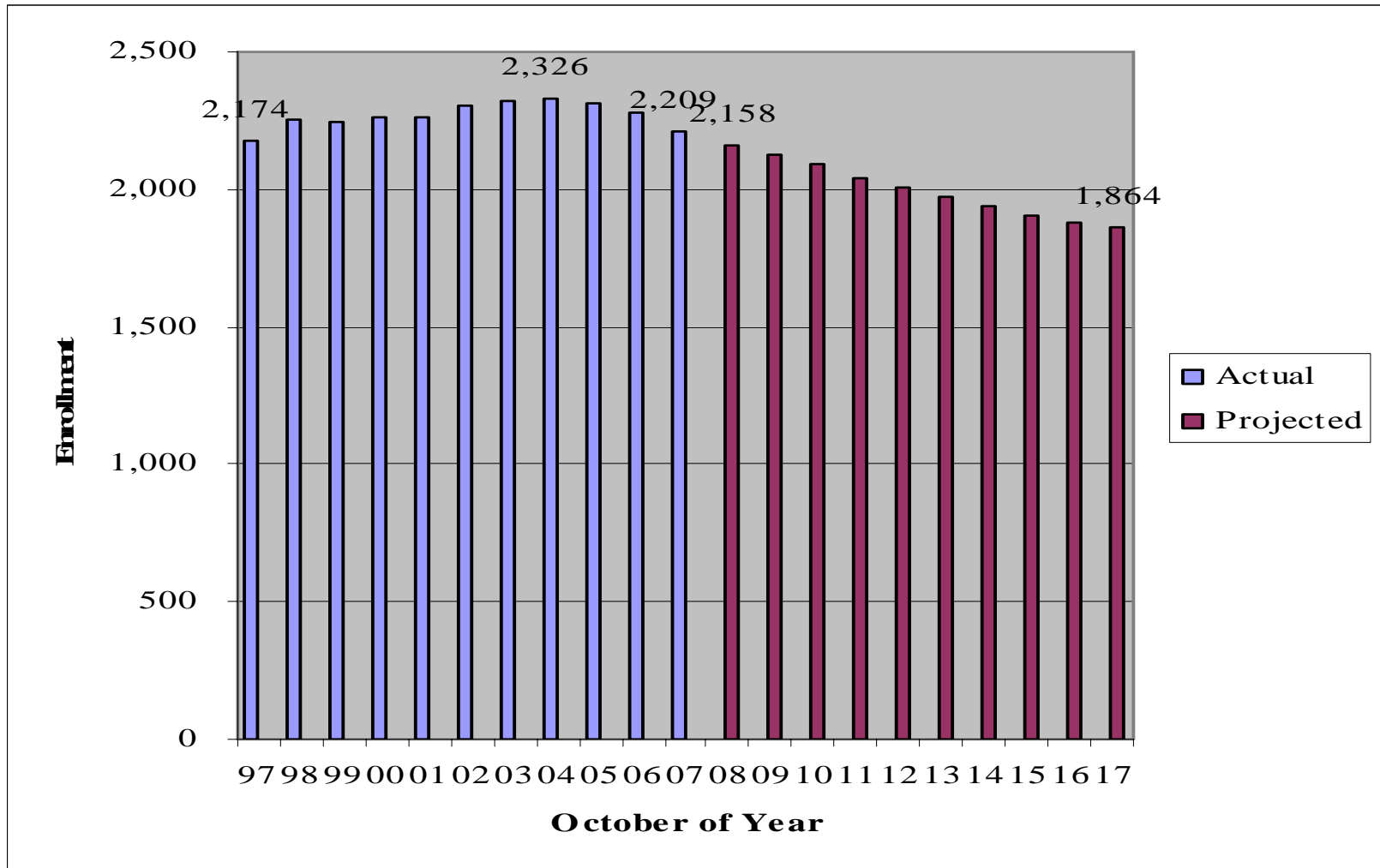
Enrollment History

Enrollment from 1970 to Date



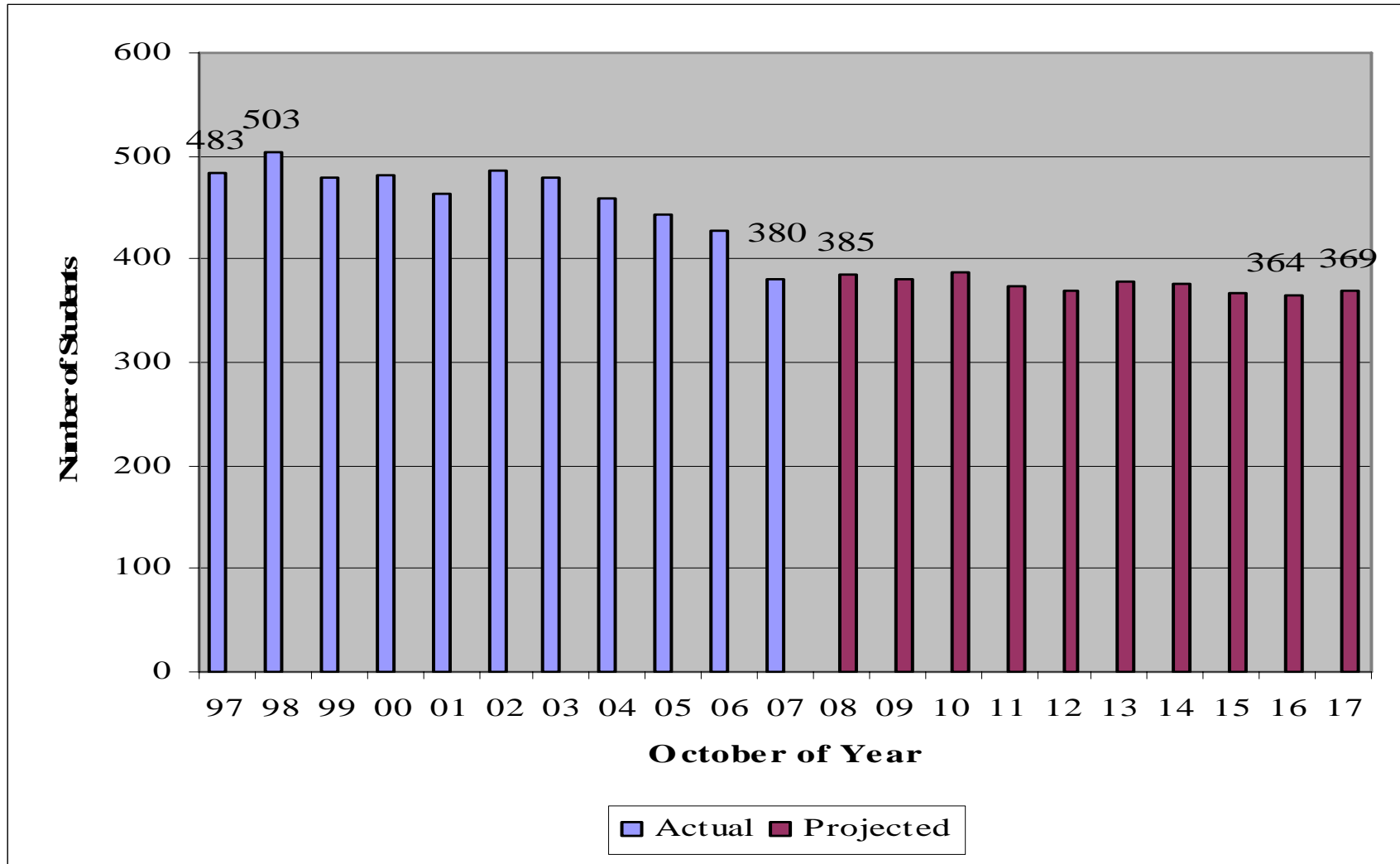
Projections by Level

Total Enrollment



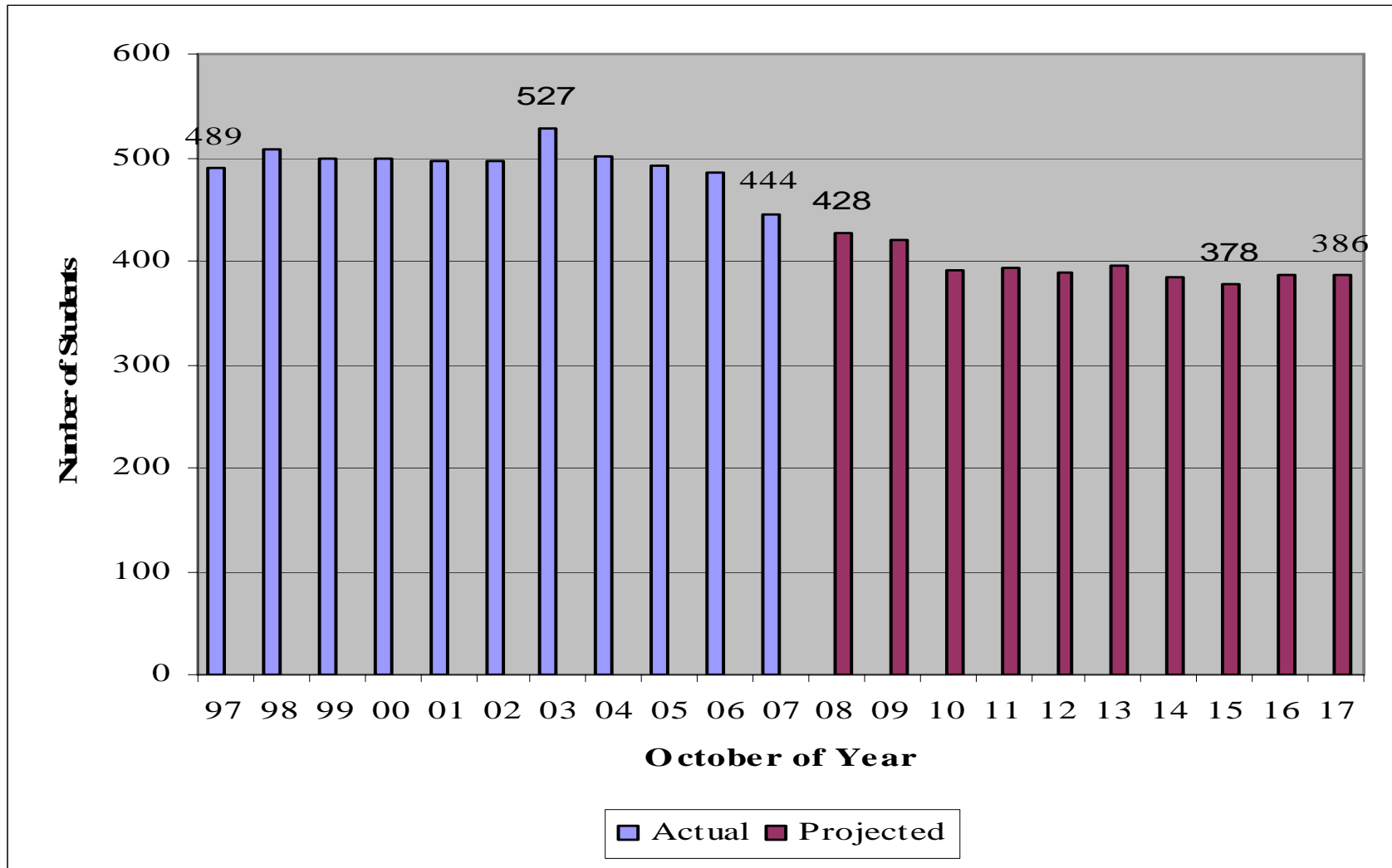
Projections by Level

K-2 Enrollment



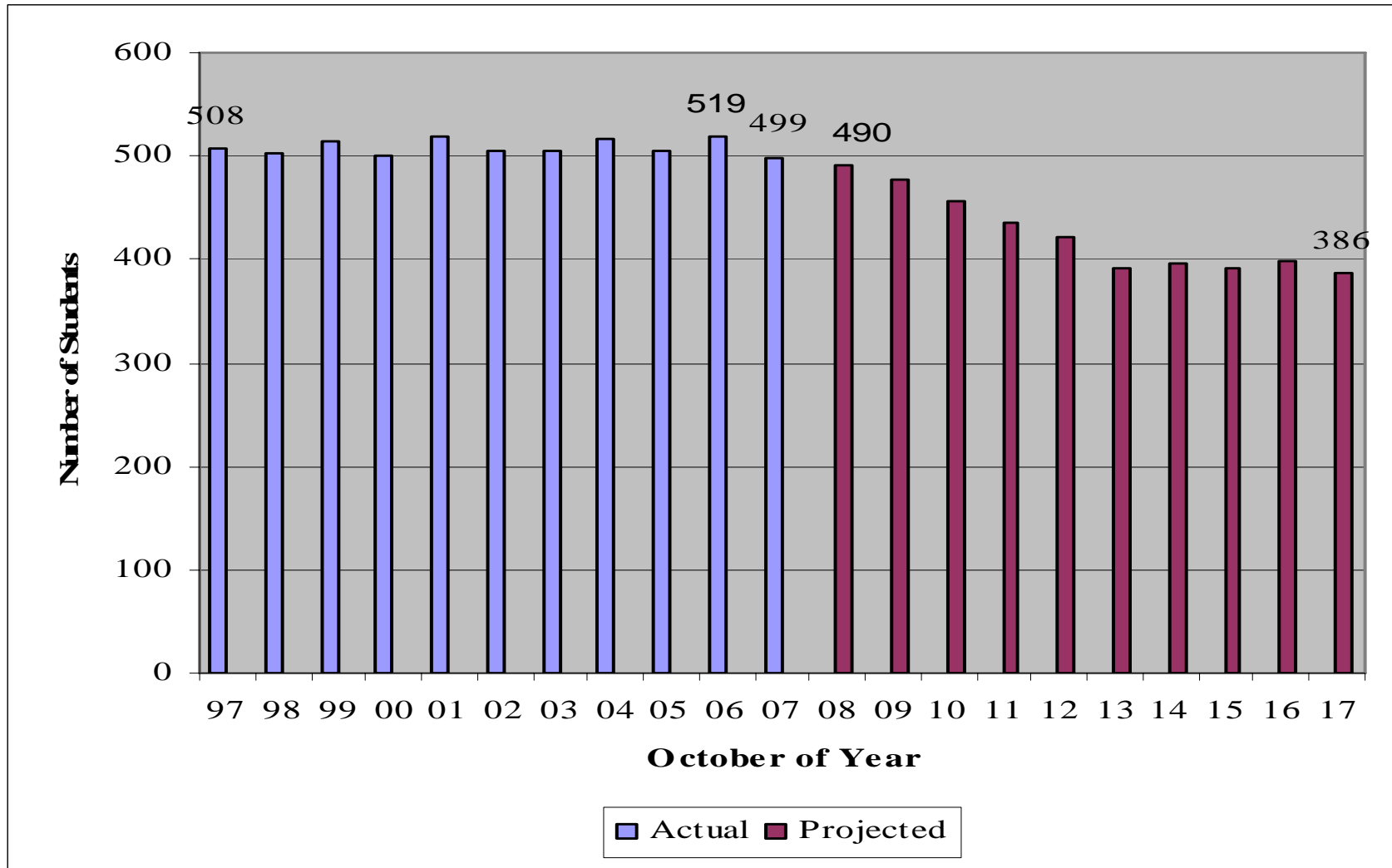
Projections by Level

3-5 Enrollment



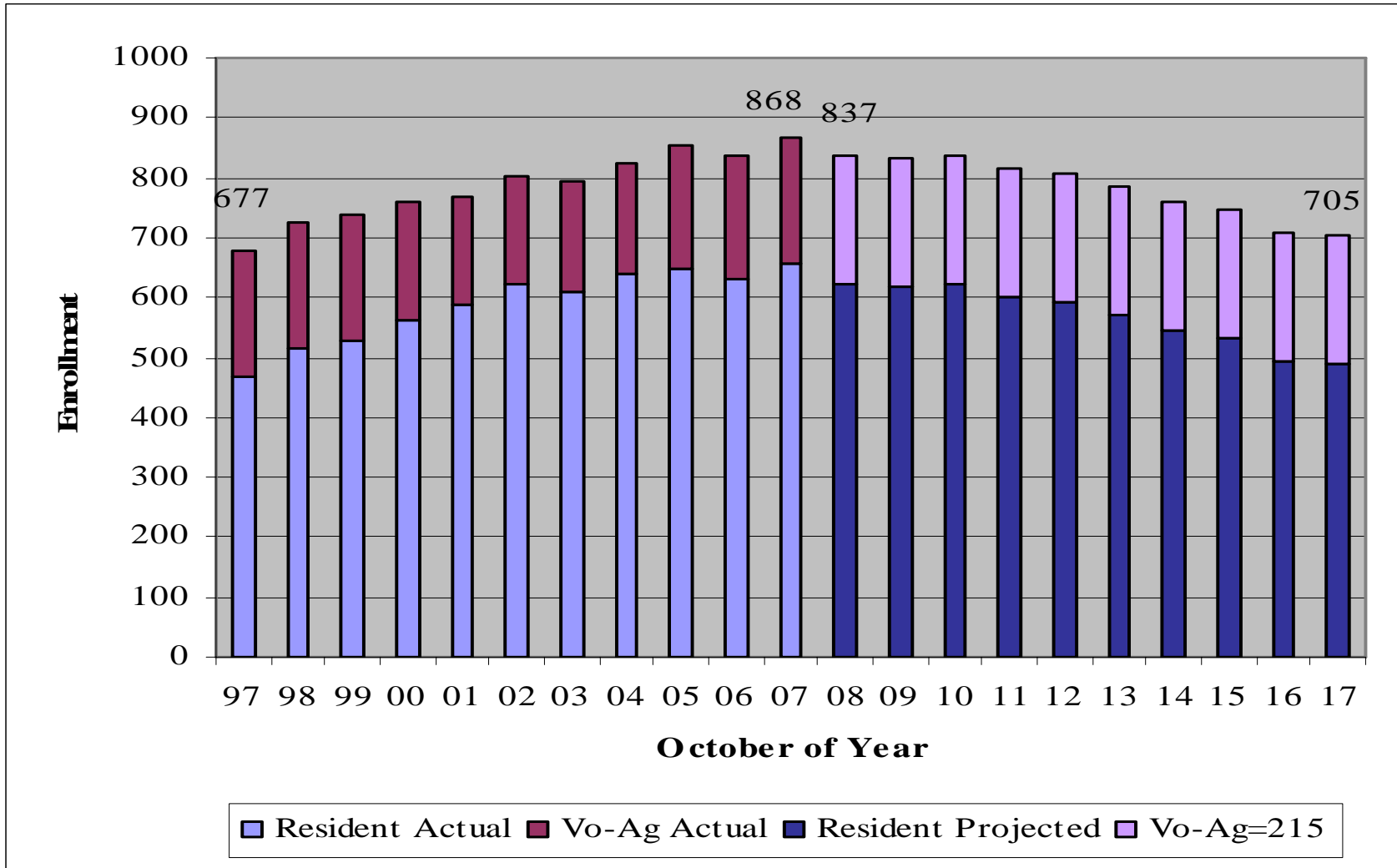
Projections by Level

6-8 Enrollment



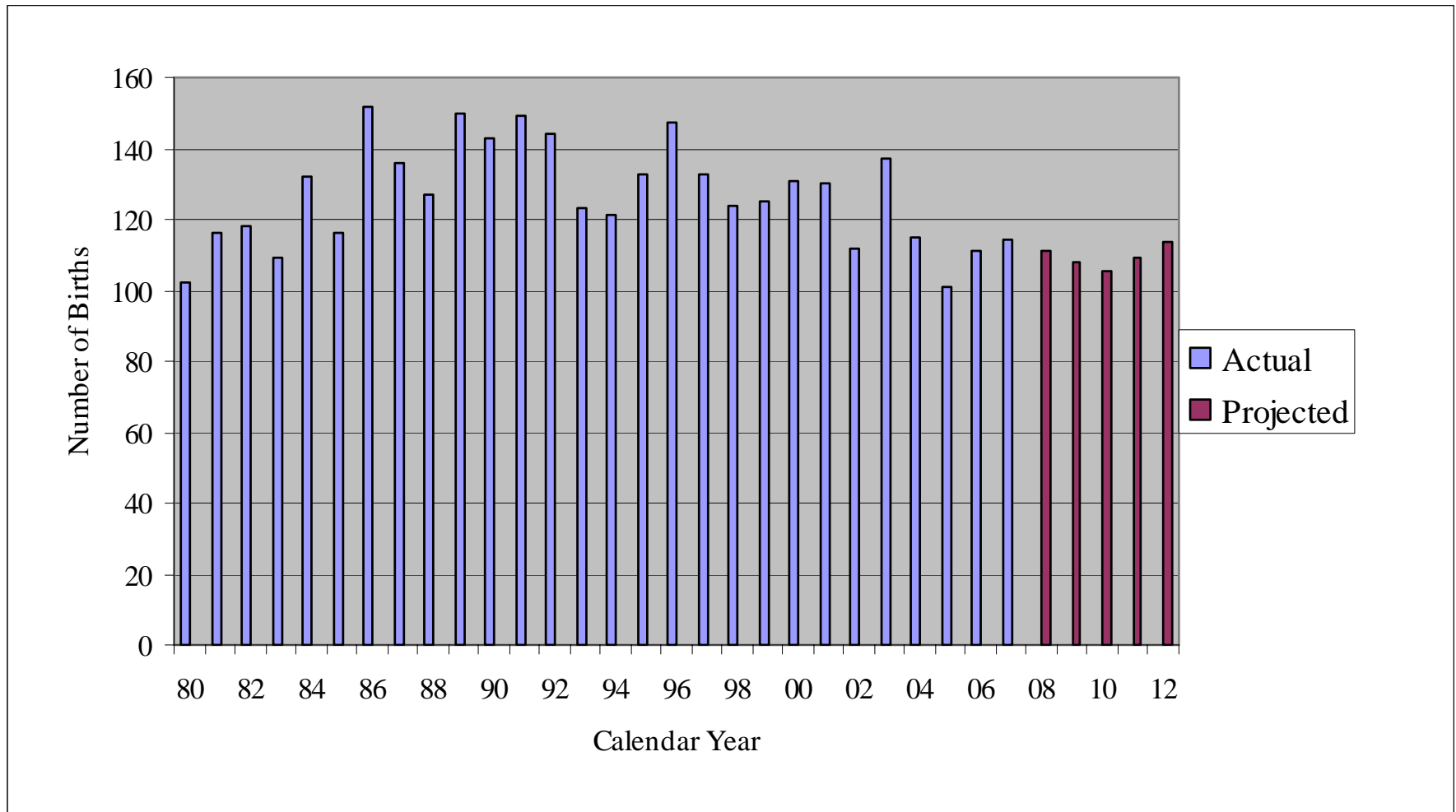
Projections by Level

9-12 Enrollment



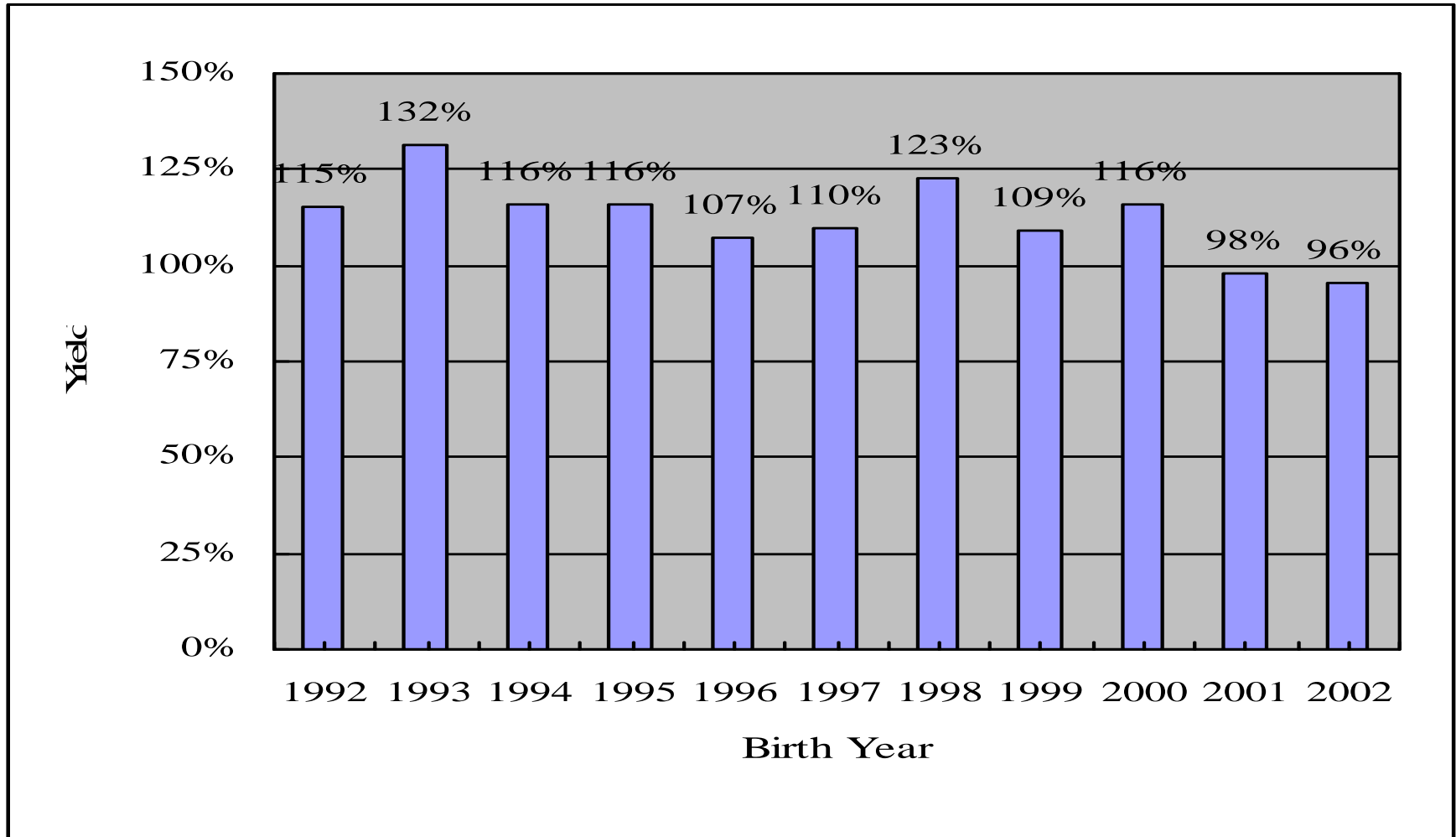
Contributing Factors

Births 1980 to 2012

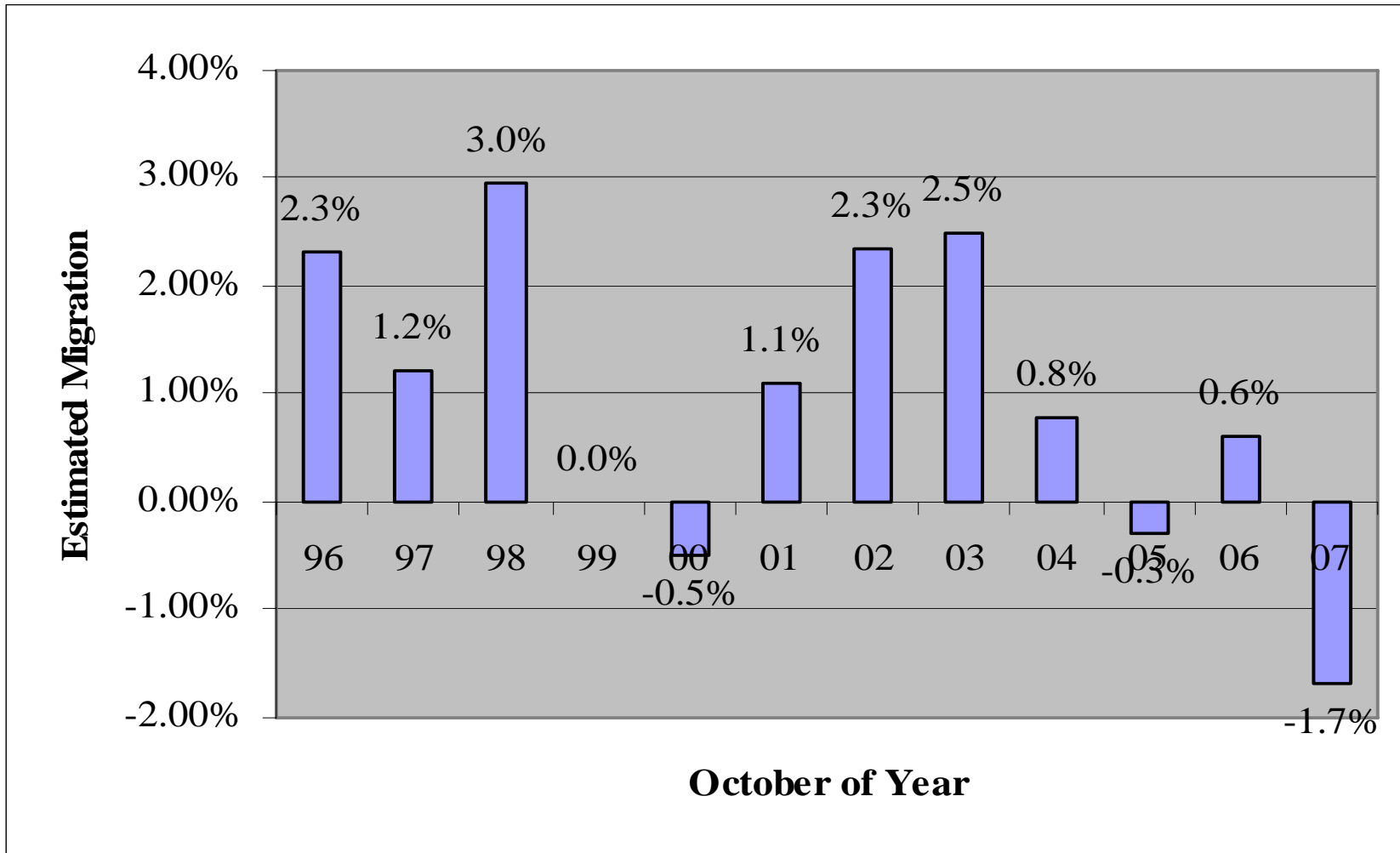


Contributing Factors

Birth to Kindergarten Growth

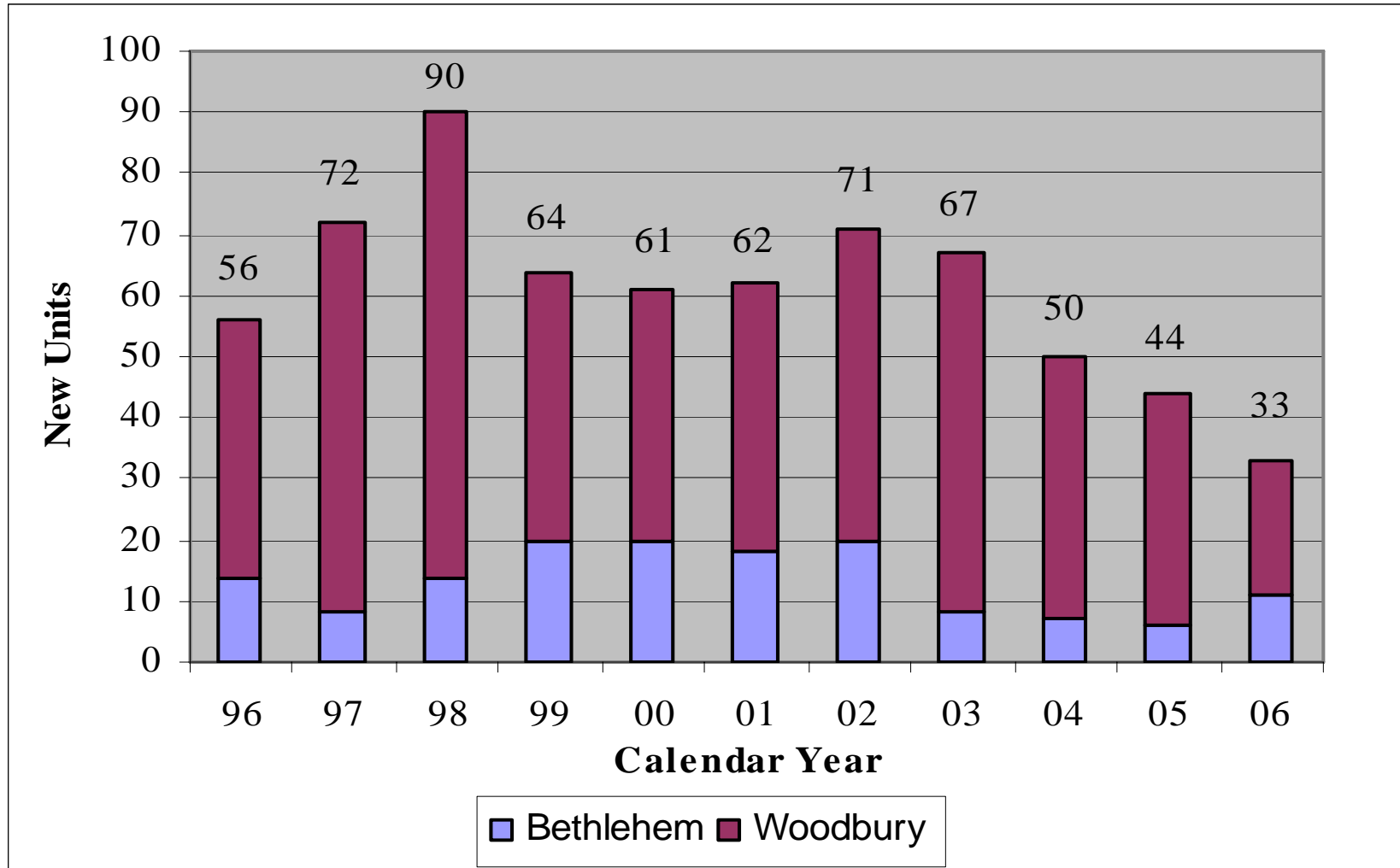


Estimated Student Migration



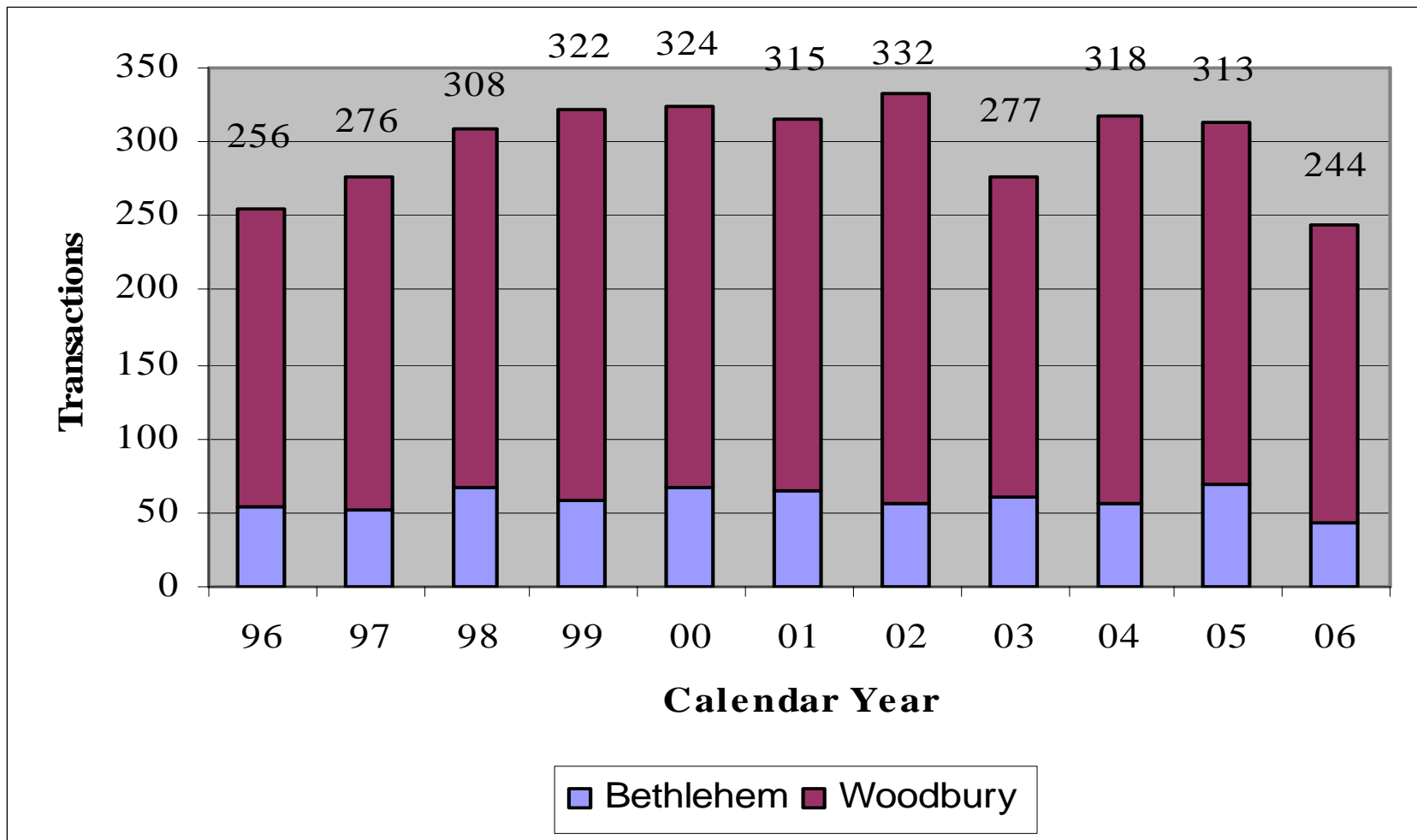
Contributing Factors

Net New Housing Units



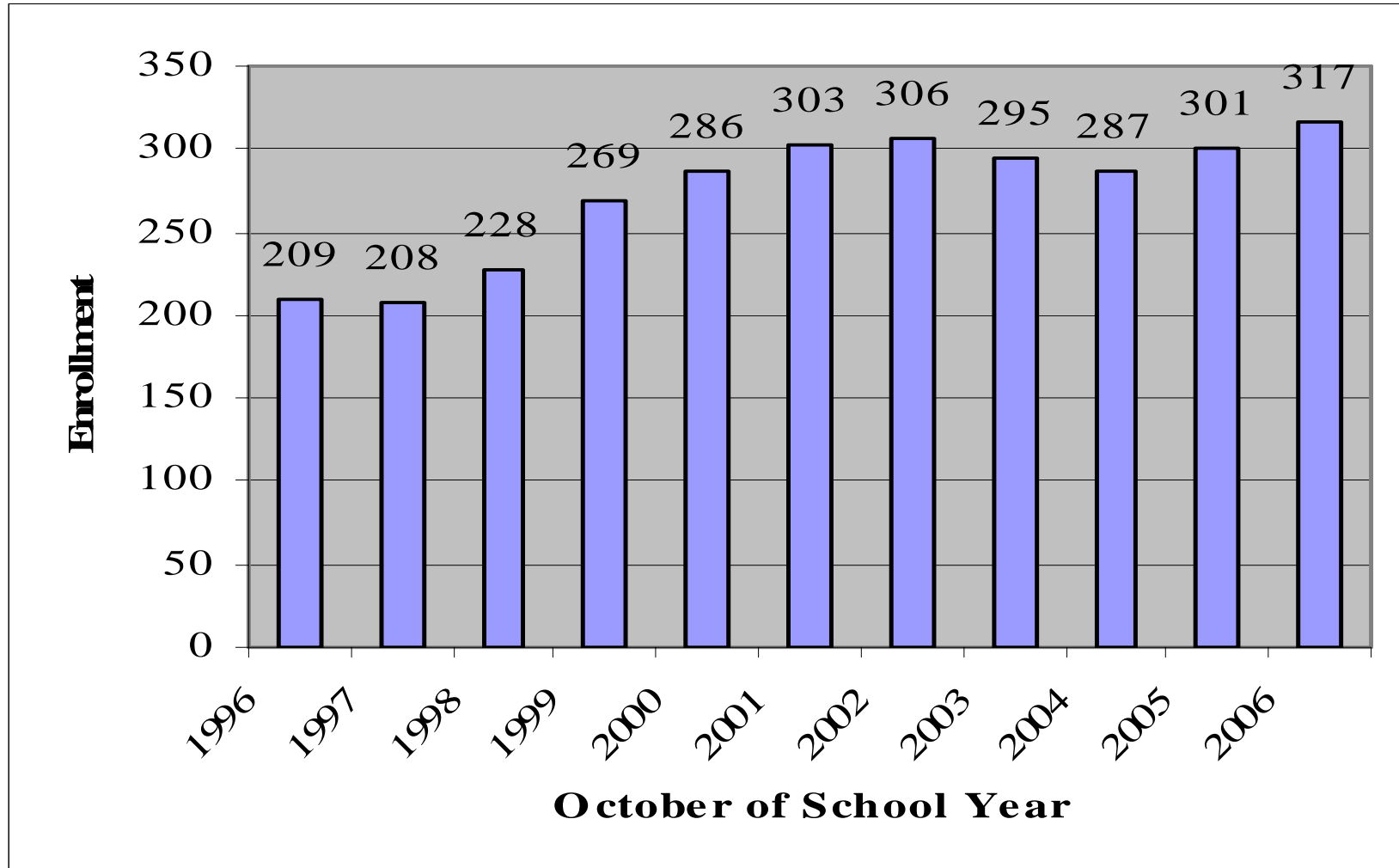
Contributing Factors

Estimated Sales of Existing Units



Contributing Factors

Non-Public Enrollment



Other Contributing Factors

- Full-day Kindergarten

- Implemented late. No data available. Usually results in increased enrollment. Not simulated.

- School Construction

- May see slight decline immediately preceding and during construction, followed by increase afterward.

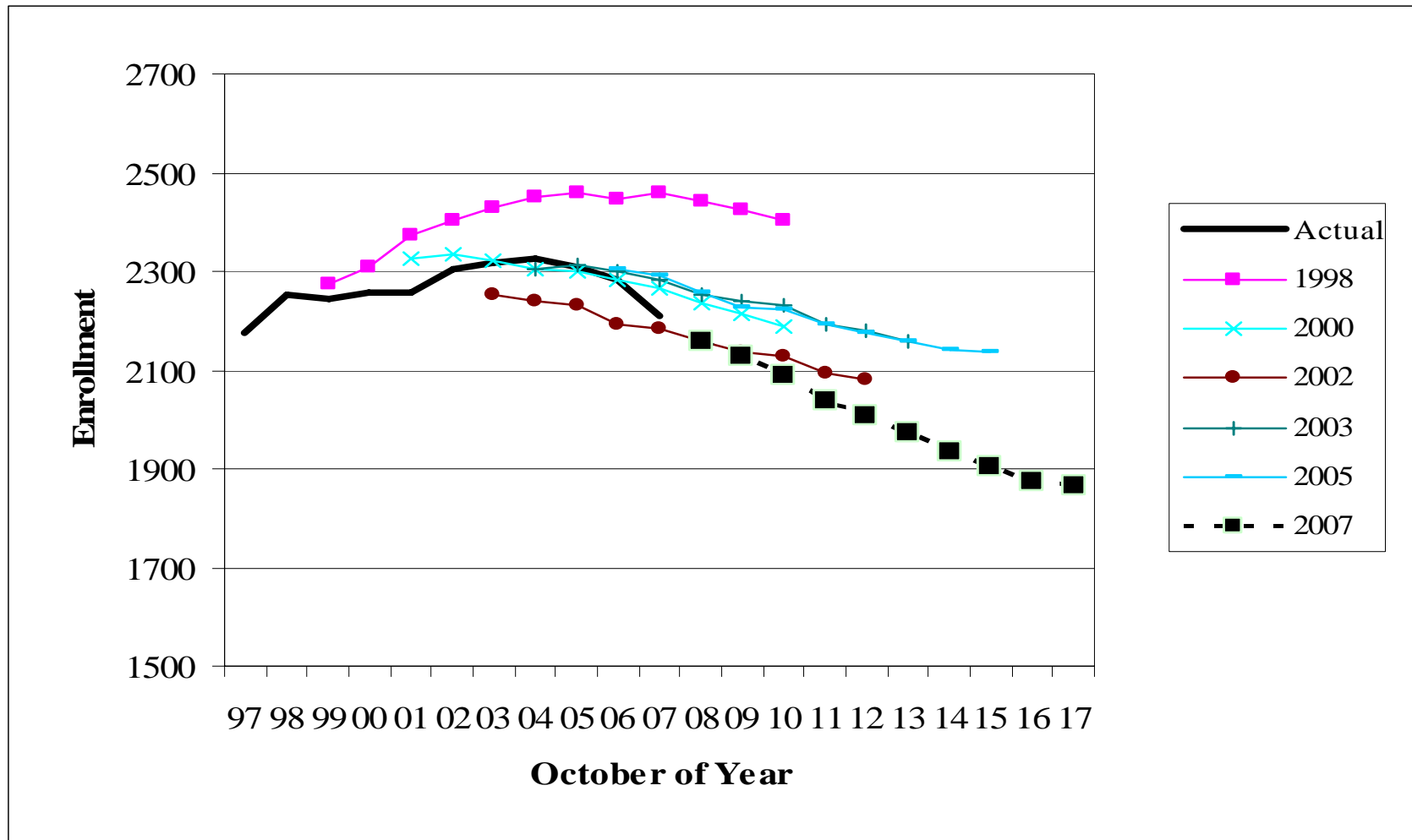
- Regional Magnets

- Averaged 3.3 over past 3 years. A non-factor

- Non-residents (Non-Vo Ag)

- Averaged 5 over past 3 years. A non-factor.

Accuracy of Prior Projections



Region 14 Enrollment Projections to 2017

Questions?

Peter M. Prowda, PhD
peteprowda@yahoo.com
(860) 658-9919