

Gain in Median DRP Scores

**Median Scores = Fall Independent (Norm)
Both Levels for Spring (Norm)**

3rd Grade Median = 37 (25)

*Instr 46 (42) Math Curse
*Indep 35 (31) Sal Takes Charge

4th Grade Median = 37 (34)

Instr 51(49) Old Yeller
Indep 40 (38) Halloween with
Morris and Boris

5th Grade Median = 42 (42)

Instr 61(55) Jane Eyre
Indep 50 (44) Charlotte's Web

6th Grade Median = 49.5 (45)

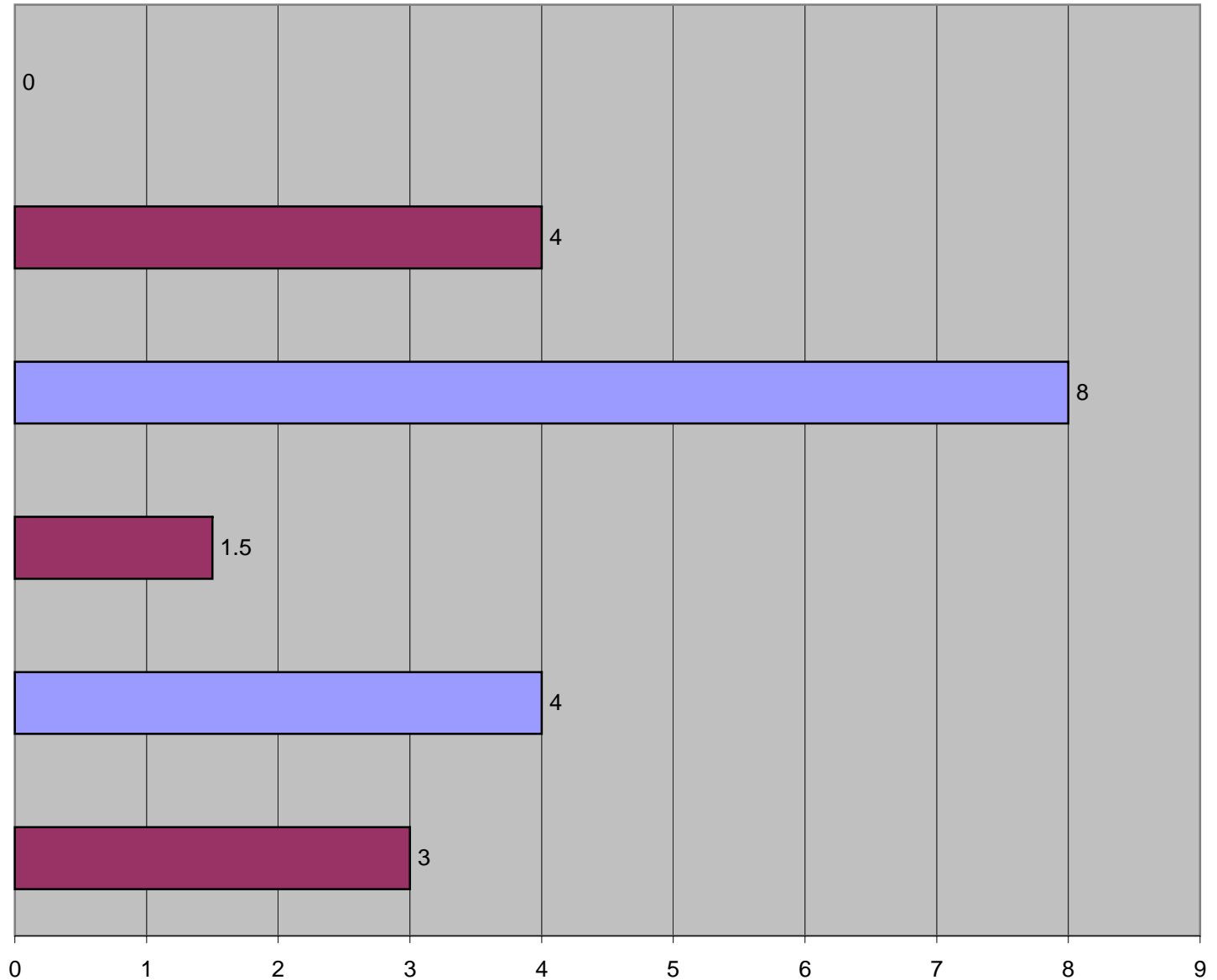
Instr 62 (59) Tale of Two Cities
Indep 51(48) A Wrinkle in Time

7th Grade Median = 56 (50)

Instr 71(63) Robinson Crusoe
Indep 60 (52) Animal Farm

8th Grade Median = 61 (54)

Instr 74 (66) Don Quixote
Indep 63 (55) 2001:Space Odyssey



Primary Textbooks' DRP = 40

Elementary Textbooks' DRP = 50

Middle School Textbooks' DRP = 56

*Different Forms for Fall and Spring

Linking DRP Scores to Text Difficulty

The same scale that is used to report students' DRP test results (at various levels of comprehension) is used to measure the difficulty of text. Therefore, test results can be used to inform instruction.

For example, a student receiving a DRP score of 50 at P=.70 should be able to read a typical elementary school textbook (average difficulty 50 DRP units) or *Charlotte's Web* (50 DRP units) with normal classroom assistance. Students receiving lower scores may need additional help.

DRP difficulty values for more than 6,600 textbooks in current use are available on the TASA Website: www.tasaliteracy.com.

DRP difficulty values for more than 33,000 works of literature and popular titles are available on DRP→BookLink® software.

DRP→BookLink is designed to help classroom teachers, reading specialists, librarians, and curriculum advisors identify books appropriate for their students' reading abilities. The database is updated each year with additional titles selected from award-winning authors. Each book has been analyzed for its text difficulty, indexed in terms of the age-appropriateness of the content, and assigned a value on the DRP Scale.

Copies of DRP→BookLink may be ordered from TASA, 4 Hardscrabble Heights, Brewster, P.O. Box 382, NY 10509. For a free demonstration version CD of DRP→BookLink, call TASA at 800-800-2598, or visit our Website www.tasaliteracy.com.

DRP® Scale of Text Difficulty	
TEXTBOOKS & EXTRACURRICULAR MATERIALS	LITERATURE AND POPULAR TITLES
	76 <i>Moll Flanders</i>
	75
	74
	73 <i>The Adventures of Don Quixote</i>
	72 <i>Books That Changed the World</i>
First Year College Textbooks*	71 <i>Robinson Crusoe</i>
	70 <i>Absalom, Absalom</i>
Lead Articles of Newspapers*	69 <i>Profiles in Courage</i>
	68 <i>Silent Spring</i>
	67 <i>The Scarlet Letter</i>
Driver's License Manuals*	66 <i>Democracy in America</i>
	65 <i>The Prince</i>
	64 <i>One Hundred Years of Solitude</i>
	63 <i>2001: A Space Odyssey</i>
High School Textbooks*	62 <i>Roots</i>
	61 <i>Jane Eyre</i>
	60 <i>Animal Farm</i>
	59 <i>Across Five Aprils</i>
	58 <i>Anne Frank: The Diary of a Young Girl</i>
	57 <i>The Hobbit</i>
Middle School Textbooks*	56 <i>Baseball's Greatest Games</i>
	55 <i>Moon Over Tennessee</i>
	54 <i>Harry Potter and the Sorcerer's Stone</i>
	53 <i>Island of the Blue Dolphins</i>
	52 <i>Maniac Magee</i>
	51 <i>Old Yeller</i>
Elementary School Textbooks*	50 <i>Charlotte's Web</i>
	49 <i>How to Eat Fried Worms</i>
	48 <i>Sarah, Plain and Tall</i>
	47 <i>The Magic School Bus Inside the Earth</i>
	46 <i>Math Curse</i>
	45 <i>Superfudge</i>
	44 <i>The Boxcar Children</i>
	43 <i>Amelia Bedelia</i>
	42 <i>Shoeshine Girl</i>
	41 <i>Frog and Toad Are Friends</i>
Primary School Textbooks*	40 <i>Chicka Chicka Boom Boom</i>
	39 <i>The Golly Sisters Go West</i>
	38 <i>Nate the Great</i>
	37 <i>Clifford, the Big Red Dog</i>
	36 <i>Morris the Moose</i>
	35 <i>The Cat in the Hat</i>
	34 <i>Are You My Mother?</i>
	33 <i>Ranger Don</i>
	32 <i>My Dog's the Best!</i>
	31 <i>Green Eggs and Ham</i>

* Average text difficulty



Median DRP Unit Scores for Fall and Spring

Level	Instructional						Independent	
Grade	P=.70		P=.75		P=.80		P=.90	
	Fall	Spring	Fall	Spring	Fall	Spring	Fall	Spring
2	27	35	24	32	21	29	15	21
3	39	45	36	42	33	39	25	31
4	48	52	45	49	42	46	34	38
5	56	58	53	55	50	52	42	44
6	59	62	56	59	53	56	45	48
7	64	66	61	63	58	60	50	52
8	68	69	65	66	62	63	54	55
9	71	72	68	69	65	66	57	58
10	73	74	70	71	67	68	59	60
11	75	76	72	73	69	70	61	62
12	76	77	73	74	70	71	62	63

Summary of 2007-08 DRP Scores Grades 3-8

	Fall P90 Indep	Fall P75 Instruc	Spr P90 Indep	Spr P75 Instruc
8th Grade				
Region 14 Median	61	72	64	75
National Norms Median	54	65	55	66
Percent greater than 57 (The Hobbit)	66	87	67	86
Percent able to read 56 or above (MS texts)	69	87	70	86
Percent above Fall Median of 59.5	56	82	63	81.3
7th Grade				
Region 14 Median	56	67	60	71
National Norms Median	50	61	52	63
Percent able to read 56 or above (MS texts)	52.5	82.1	63.6	87.7
Percent able to read 53 or above (Island of the Blue Dolphin)	57.7	82.8	66.3	87.7
Percent above Fall Median of 56	62	85	68	90
6th Grade				
Region 14 Median	49.5	60.5	51	62
National Norms Median	45	56	48	59
Percent able to read 56 or above (MS texts)	35.2	63	40.1	64.8
Percent able to read 53 or above (Island of the Blue Dolphin)	40.7	72.2	46.3	72.8
Percent above Fall Median of 49.5	50	78.4	54	77
5th Grade				
Region 14 Median	42	53	50	61
National Norms Median	42	53	44	55
Percent at 50 or above (intermed grade texts, Charlotte's Web)	32	68	52	83
Percent able to read 48 or above (Sarah, Plain and Tall)	34	72	56	86
Percent above Fall Median of 42	51	90	75	95
4th Grade				
Region 14 Median	37	48	40	51
National Norms Median	34	45	38	49
Percent at 50 or above (intermed grade texts, Charlotte's Web)	15.9	43	17.2	53.6
Percent able to read 44 or above (The Boxcar Children)	23	61	32	68
Percent above Fall Median of 37	47.3	80.7	55.3	86.7
3rd Grade				
Region 14 Median	37	46	*35	*46
National Norms Median	25	36	31	42
Percent at 47 or above (The Magic School Bus Inside the Earth)	19	50	12	45
Percent at 37 or above (Clifford the Big Red Dog)	46.8	70.5	40.3	73.4
Percent above Fall Median of 37	46.8	70.5	40.3	73.4

* Different forms and formats for the Fall and Spring 3rd Grade DRPs